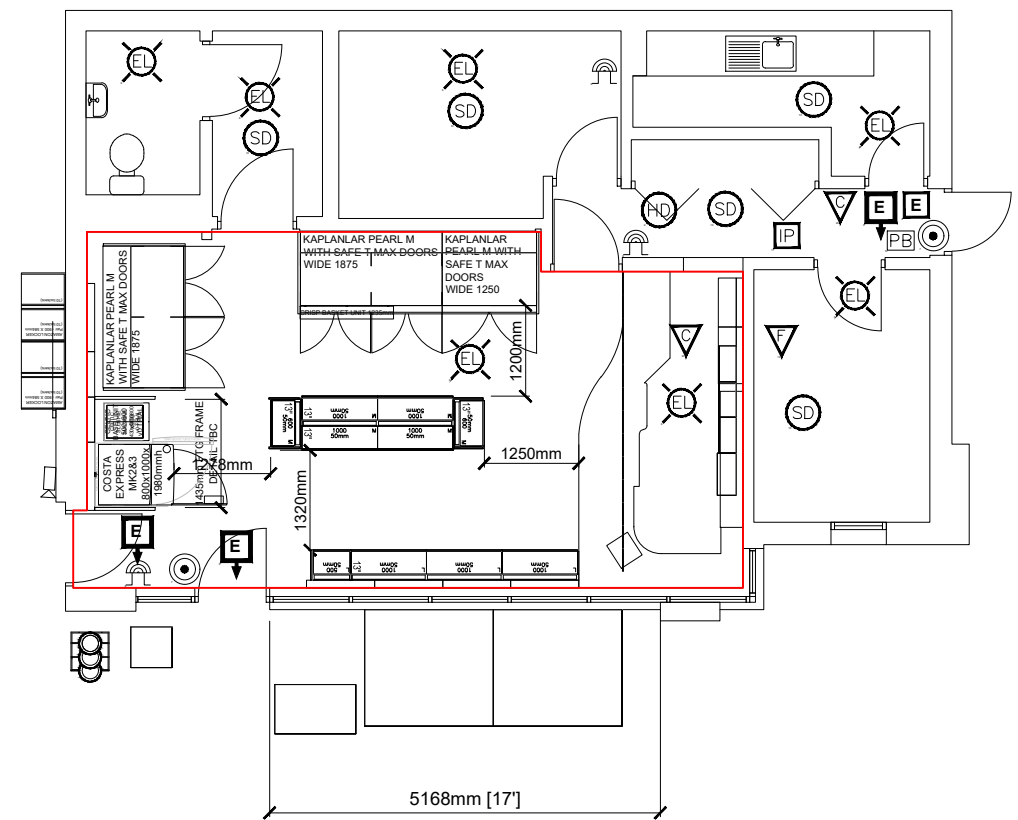


Site Plan Scale 1:1250



THE ENTIRE PREMISES MAY BE USED FOR THE SALE OF ALCOHOL AND THE PROVISION OF LATE NIGHT REFRESHMENT

Key - Fire Symbols

[Symbol]	NOTICE - 'FIRE DOOR-KEEP
[Symbol]	NOTICE - 'KEEP LOCKED
[Symbol]	ILLUMINATED EXIT DIRECTION
[Symbol]	EXIT SIGN
[Symbol]	EMERGENCY LIGHTING
[Symbol]	FIRE ALARM CALL POINT
[Symbol]	AUDIBLE WARNING
[Symbol]	EXIT DETECTOR
[Symbol]	SMOKE DETECTOR
[Symbol]	ALARM INDICATOR PANEL
[Symbol]	DOORS FITTED WITH PUSH BARS
[Symbol]	DOORS FITTED WITH PRESSURE RELEASE
[Symbol]	RAISER SHUTTER DOOR
[Symbol]	FIRE EXTINGUISHER - WATER TYPE
[Symbol]	FIRE EXTINGUISHER - FOAM TYPE
[Symbol]	FIRE EXTINGUISHER - CARBON DIOXIDE
[Symbol]	FIRE EXTINGUISHER - DRY POWDER TYPE
[Symbol]	FIRE EXTINGUISHER - AQUEOUS SOLUTION
[Symbol]	FIRE EXTINGUISHER - VAPORISING LIQUID
[Symbol]	FIRE BLANKET
[Symbol]	FIRE HOSE REEL
[Symbol]	FIRE RESISTANT WALLS
[Symbol]	FIRE RESISTANT DOORS

ALL REQUIRED AREAS OF THE STORE ARE COVERED BY THE SPINKLER SYSTEM

NOTES:

1. FIRE FIGHTING EQUIPMENT & ALL OF THE REQUIREMENTS OF THE FIRE SERVICE WILL BE INCORPORATED & WILL BE PROVIDED TO COMPLY WITH THE EUROPEAN STANDARDS

No. BSEN3 & BS7863.

FIRE STANDARDS:

1. FIRE SAFETY RELATED SIGNS AND NOTICES ARE TO THE HEALTH AND SAFETY (SAFETY SIGNS & SIGNALS) REGULATIONS ACT 1996, THOSE THAT COMPLY TO BS 5499, PART 1, 1990 ALSO COMPLY
2. ILLUMINATED 'EXIT' SIGNS ARE TO CONFORM TO BS2560
3. FIRE FIGHTING EQUIPMENT IS TO COMPLY WITH EUROPEAN STANDARDS BS EN3 AND BS 7863

Issue Number 001

353 HASTINGS

Hastings Queens Rd TN34 1RN

SALES FLOOR

RETAIL SALES AREA 427 Sq. Ft.

Scale: 1:100

only scaled on **A3**

